

Liège - Belgium

MRO Wheels and Brakes Facility



9 YEARS MAINTENANCE:

Aircraft Wheels & Brakes

FAA & EASA PART 145

ISO 9001-9100-9110-9120

NDT capabilities : ECI-MPI-DPI

GOODRICH - HONEYWELL - MEGGITT - MESSIER-BUGATTI

2008 TAT: 1000 WHEELS / YEAR -> 750 MW / 250 NW

550 BRAKES / YEAR -> 270 CARBON / 180 STEEL

2008 CAPACITY: 1400 WHEELS / YEAR

660 BRAKES / YEAR

Ideally place in the centre of EUROPE & WORLD



Maintenance, Repair and Overhaul

The MRO Facility fully equipped with a comprehensive MRO service in accordance with EASA and FAA approvals. Build on a land of 4092 m² with a building on ground surface of 735 m²

1. Wheel cell fully equip with: (343 m²) 8 staff

Kunz bead breaker.
Kunz Wheel lifter
Hocking Eci Automatic Wheel Scan MkIV x2
Finsonic Ultrasonic cleaner
Bauer Wheel building stand x2
Inflation cage
Nitrogen Inflating System
Deflating System
Immersion inspection Water tank
Hoist with electrical Lift
Internal washing Bay

2. Non Destructive Testing (NDT) (49 m²) 2 staff

This cell checks for any cracks that may appear during the use of the assemblies.

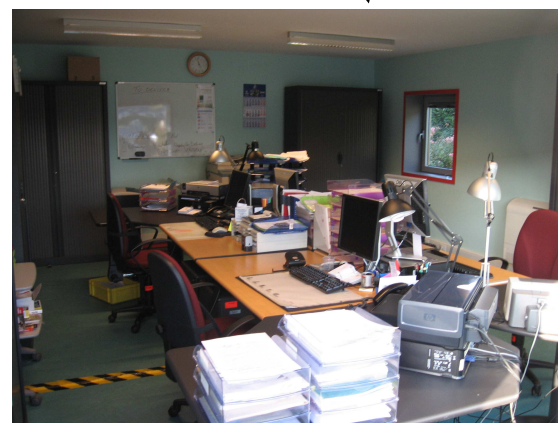
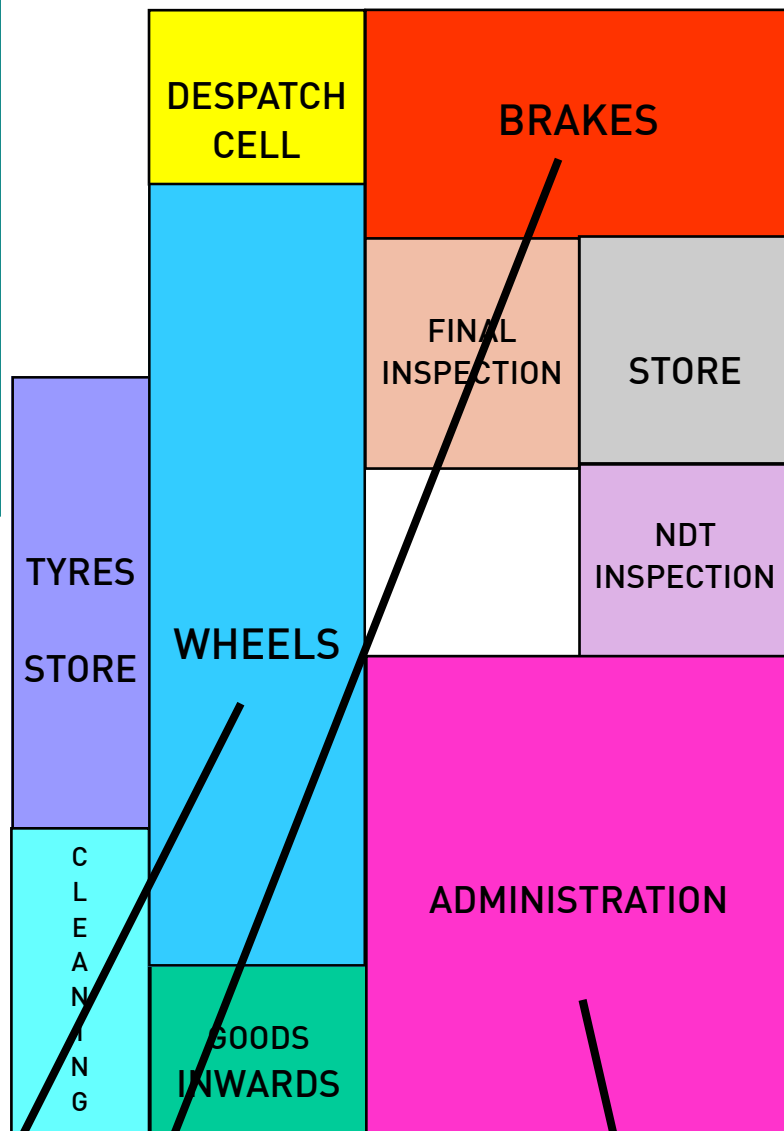
The cell offers three disciplines:

- Dye Penetrant Inspection
- Magnetic Particle Inspection
- Eddy Current Intensity

3. Brake cell (147 m²) 5 staff

Brake cell provide Carbon brake and Steel brakes Repair and Overhaul capabilities Comprising:

Test Rig For Skydrol hydraulic fluid
Test rig for Mil Perf 5606 hydraulic fluid
Drill stand
Riveting machine
Spining riveting machine
Aerota brake cleaner machine
Snapon blasting plastic media
Various specific tools



4. Administration (294m²) on two floors

2007 build offices, comprising:

Customer office room for 4 Staff
Financial manager Office 1 Staff
Director Office 1 Staff
Team leader office 1 staff
Conference Room 6 person
Male (5), female (1) comodities And 2 Showers
It room 2 staff
Cantine for 16 staff

5. Stores fully equip on two floors

(108 m²) for spares and tires store (147m²)